

XCW, Limit Switches

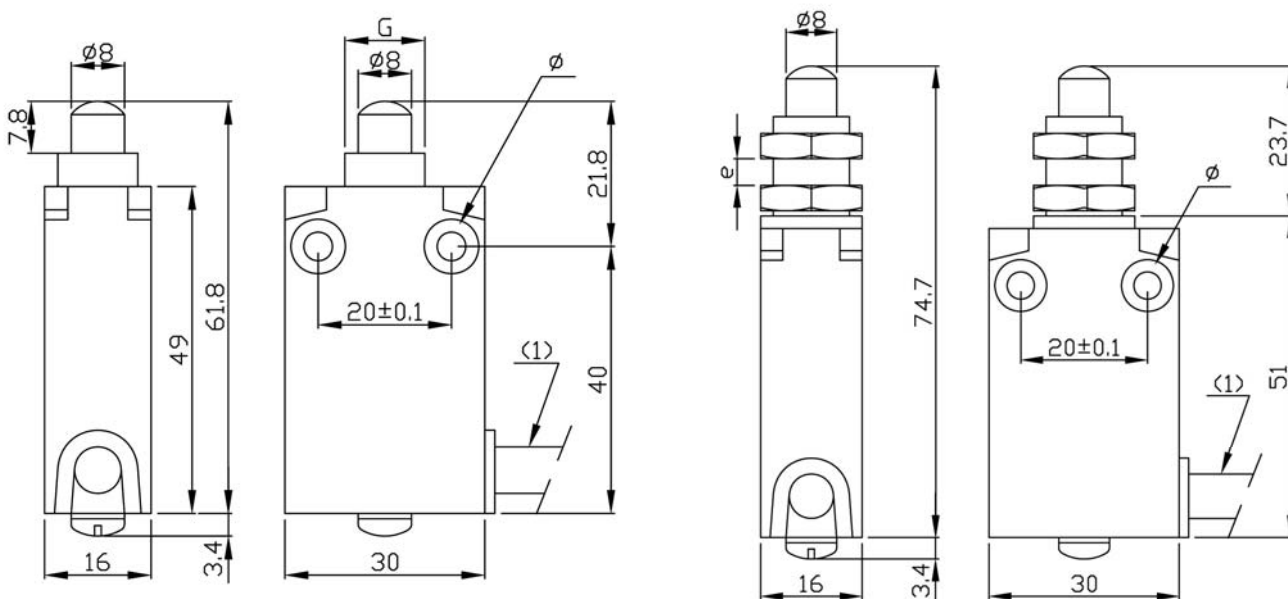
The XCW family is a full pre-cabled range of certified ATEX limit switches. Available in a range of cable lengths, the XCW's compact bodies and large choice of heads makes them a practical solution in process systems and much more.

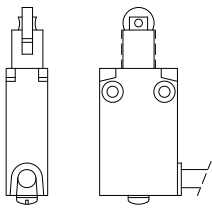
Specifications

Main body	Zinc Alloy (ZnAl 4 - Zamak)
IP Rating	IP66 – IP67
Temperature	-20°C to +60°C
Mechanical life	10 millions
Approvals ATEX	03ATEX0083X
Standards	Cenelec EN50014, EN50018, EN500281-1-1
Ex-Code	EEx d IIC T6 T85°C II 2 GD
Cable type	Pre-wired cable
Cable length	Standard 1, 2, 5, 10 meters

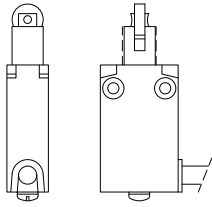


Dimensions

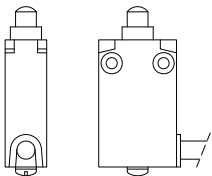




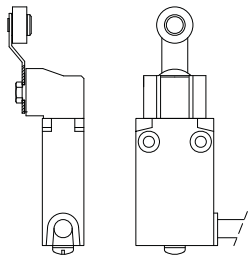
XCWA102



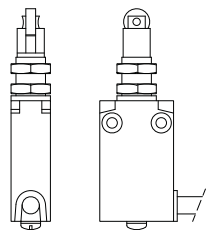
XCWA103



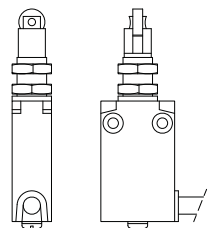
XCWA110



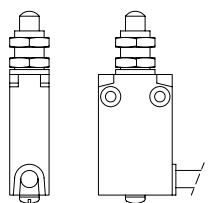
XCWA115



XCWF102



XCWF103



XCWF110

Limit switches EEx"d" – "Severe duty" compact

XCW

1 C/O snap action contact, pre-wired cable.
Available in: 1 meter, 2 meters, 5 meters, or 10 meters.

Description	1 m cable length	2 m cable length	5 m cable length	10 m cable length
Fixing by the body				
Steel end plunger (1) Weight Kg	XCWA110 0,240	XCWA1102 0,250	XCWA1105 0,500	XCWA1100 0,900
Steel roller plunger for lateral cam approach (2) Weight Kg	XCWA102 0,240	XCWA1022 0,260	XCWA1025 0,500	XCWA1020 0,950
Steel roller plunger for traverse cam plunger approach (2) Weight Kg	XCWA103 0,240	XCWA1032 0,260	XCWA1035 0,500	XCWA1030 0,950
Thermoplastic roller lever (3) Rotary operation Weight Kg	XCWA115 0,250	XCWA1152 0,300	XCWA1155 0,550	XCWA1150 1,000
Fixing by the head				
Steel end plunger (1) Weight Kg	XCWF110 0,260	XCWF1102 0,280	XCWF1105 0,550	XCWF1100 0,950
Steel roller plunger for lateral cam approach (2) Weight Kg	XCWF102 0,260	XCWF1022 0,280	XCWF1025 0,550	XCWF1100 0,950
Steel roller plunger for traverse cam approach (2) Weight Kg	XCWF103 0,260	XCWF1032 0,280	XCWF1035 0,550	XCWF1030 0,950
Roller lever (mounted by customer) for XCWA110 (4) Weight Kg	XCWZ24 0,080			

(1) Actuation on end. Speed between 0.001 and 0.5m/s.

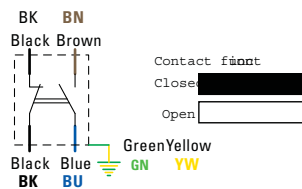
(2) Actuation by 30° cam. Speed between 0.001 and 0.1m/s.

(3) Actuation by 30° cam. Maximum speed 1.5m/s.

(4) 1 direction of actuation by 30° cam.

Contact function

Wiring diagram



XCW•110

XCWZ24

XCW•102,
XCW•103,
XCWA115

