

This extensive range of products and components is well known worldwide for its reliability, its design and the many opportunities in the choice of heads.

They allow the customers to implement and operate them in numerous places of their process.

### TECHNICAL DATA

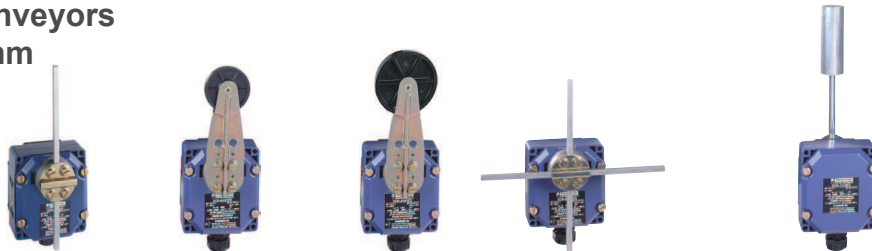
<b>Material (body)</b>	Zamac
<b>IP rating</b>	IP65 according to EN/IEC 60529
<b>Temperature range</b>	XCKW: -40°C ... +60°C XCR.W: -30°C ... +60°C
<b>Certificates</b>	INERIS 03ATEX0038X INERIS 03ATEX0039X  IECEX INE 12.0029X IECEX INE 12.0030X
<b>Marking</b>	II 2 GD Ex d e IIC T6 Gb Ex tb IIIC T85°C Db
<b>Contact block</b>	500 V, 3A

**For lifting equipment, conveyors, handling devices**  
**Fixing distance 61.5 mm**



Actuator type	Metallic rods in cross	Metallic rods in cross, reversed head
Two 2-pole NC + NC	XCKWMMR54D1H29	XCKWMMR54D2H29
Actuation speed	1.5 m/s	
Mechanical durability	2 million operations	
Contact type	Staggered, slow break	
Cable entry	2 entries with blind plug, 1 entry with cable gland ISO M20 for cable Ø 8 to 13mm	

**For lifting equipment, conveyors**  
**Fixing distance 85 x 75 mm**



Actuator type	Square rod 6 mm spring return position	Thermoplastic roller lever Ø 30 mm	Thermoplastic roller lever Ø 50 mm	Metallic square rod in cross, stay put	Conveyor belt shift monitoring Lever galvanized	Conveyor belt shift monitoring Lever in stainless steel
Two 2-pole NC + NO contacts, both operate in each direction	XCRAW111	XCRAW121	XCRAW151	XCREW181 (2)		
Two 2-pole NC + NO contacts, one operates in each direction	XCRBW111	XCRBW121	XCRBW151	XCRFW171 (3)		
2 single contacts "O + C"					XCRTW115	XCRTW215
Actuation speed	1.5 m/s					
Mechanical durability	10 million operations				0.3 million operations	
Contact type	Snap action					
Cable entry	1 entry ISO M20 for cable of Ø 8 to 13 mm					

(2) Metallic rods in cross  
 (3) Metallic rods in "T"

**Overall use**  
**Fixing distance 41 mm**



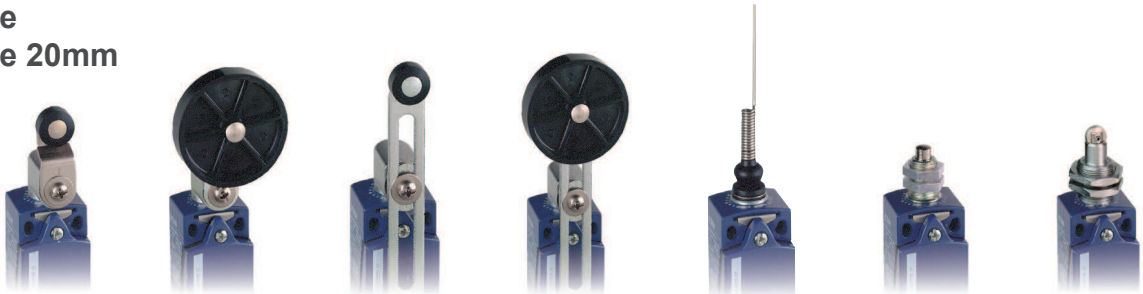
Actuator type	Metal end plunger	Steel roller plunger	Thermoplastic roller lever	Thermoplastic roller lever	"Cat's whisker"
NO + NC	XCKWM2110H29	XCKWM2102H29	XCKWM2121H29	XCKWM2115H29	XCKWM2106H29
Actuation speed	0.5 m/s		1.5 m/s		0.5 m/s
Mechanical durability	20 million operations				10 million operations
Contact type	Snap action				
Cable entry	2 entries with blind plug, 1 entry with cable gland ISO M20 for cable Ø 8 to 13mm				

### Compact range Fixing distance 20 mm



Actuator type	Metal end plunger	Booted metal end plunger	Steel roller plunger	Plastic roller, horizontal actuation	Plastic roller, vertical actuation	Plastic roller, vertical or horizontal actuation
NC + NC	XCKWD2110P16	XCKWD2111P16	XCKWD2102P16	XCKWD2121P16	XCKWD2127P16	XCKWD2128P16
NO + NC	XCKWD2910P16	XCKWD2911P16	XCKWD2902P16	XCKWD2921P16	XCKWD2927P16	XCKWD2928P16
Actuation speed	0.5 m/s			1 m/s		
Durability	15 million operations		10 million operation	15 million operations		
Type of contact	Snap action					
Cable entry	1 entry M16 for cable Ø 5 to 8 mm					

### Compact range Fixing distance 20mm



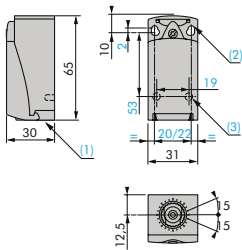
Actuator type	Thermoplastic roller lever	Thermoplastic roller lever Ø 50 mm	Variable length plastic roller lever	Variable length plastic roller Ø 50 mm	"Cat's wisker"	M18 head Metal end plunger	M18 steel roller end plunger
NO + NC	XCKWD2118P16	XCKWD2139P16	XCKWD2145P16	XCKWD2149P16	XCKWD2106P16	XCKWD21H0P16	XCKWD21H2P16
NO + NC	XCKWD2918P16	XCKWD2939P16	XCKWD2945P16	XCKWD2949P16	XCKWD2906P16	XCKWD29H0P16	XCKWD29H2P16
Actuation speed	1.5 m/s				1 m/s	0.5 m/s	
Durability	10 million operations				5 million	10 million operations	
Type of contact	Snap action						
Cable entry	1 entry ISO M16 for cable Ø 5 to 8 mm						

### Compact range Fixing distance 30 x 60 mm



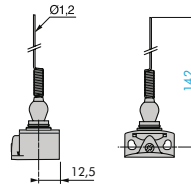
Actuator type	Metal end plunger	Steel roller plunger	Steel roller lever	Thermoplastic roller lever	Variable length thermoplastic roller lever	Round lever Ø 6 mm polyamide L = 200 mm
Contact NO + NC	XCKWJ2161H29	XCKWJ2167H29	XCKWJ210513H29	XCKWJ210511H29	XCKWJ210541H29	XCKWJ210559H29
Actuation speed	0.5 m/s	1 m/s	1.5 m/s			
Durability	30 million operations	25 million operation	30 million operations		20 million operations	
Type of contact	Snap action					
Cable entry	1 entry ISO M20 for cable Ø 8 to 13 mm					

## XCKWD - Compact range

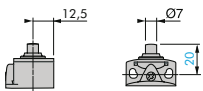


- 1) 1 entry ISO M16 x 1.5 for cable gland
- 2) 2 slotted holes  $\varnothing 4.3 \times 6.3$  mm and fixing distance 22 mm or 2 holes  $\varnothing 4.3$  mm and fixing distance 20 mm
- 3) 2 holes for mounting  $\varnothing 3$  mm, depth 4 mm

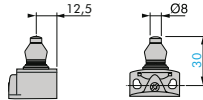
ZCE06



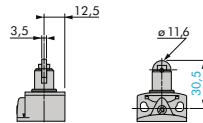
ZCE10



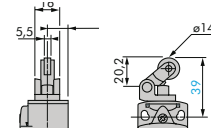
ZCE11



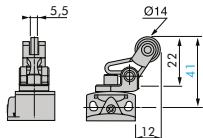
ZCE02



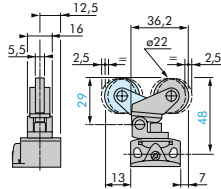
ZCE21



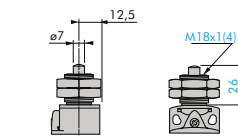
ZCE27



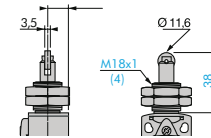
ZCE28



ZCEH0

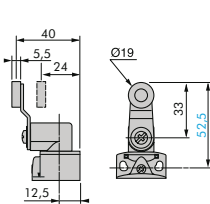


ZCEH2

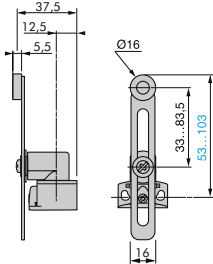


4) Screw of 3,5 mm

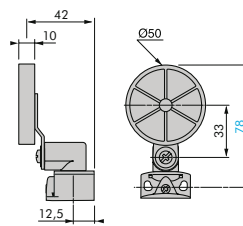
ZCE01 + ZCY18



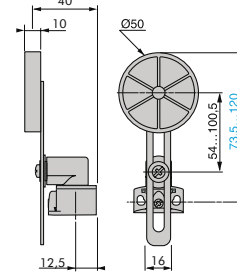
ZCE01 + ZCY45



ZCEH01 + ZCY39

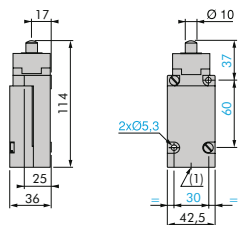


ZCE01 + ZCY49

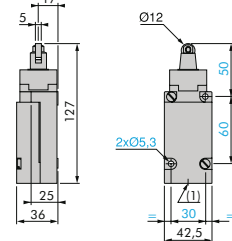


## XCKWJ - Classique range

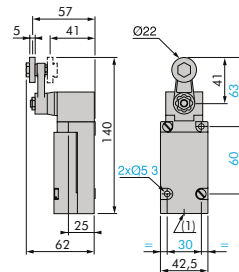
XCKWJ2161H29



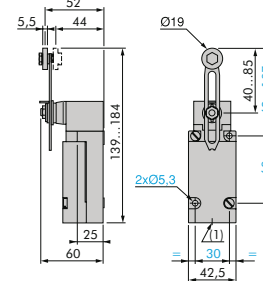
XCKWJ2167H29



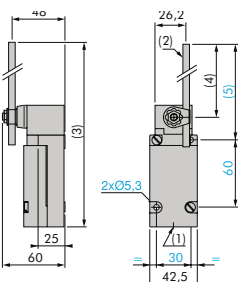
XCKWJ210513H29  
XCKWJ210511H29



XCKWJ210541H2



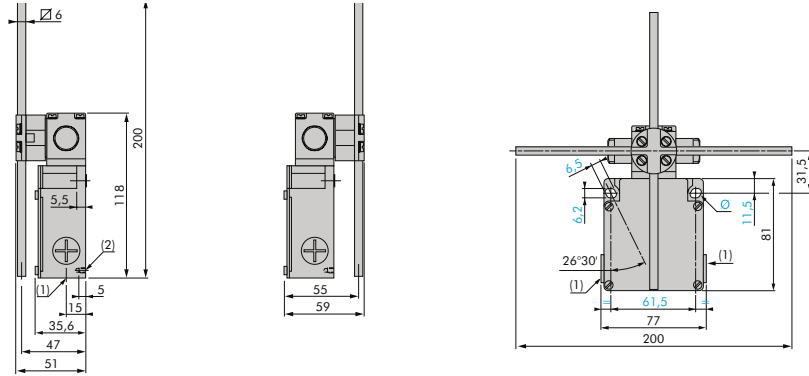
XCKWJ210559H29



- 1) 1 entry ISO M20 x 1.5 for cable gland
- 2) Lever  $\varnothing 6$  mm, length 120 mm
- $\varnothing$  2 slotted holes  $5.3 \times 7.3$  mm

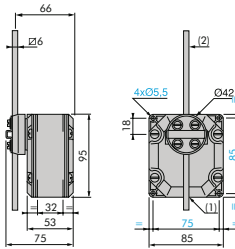
### XCKWMR, XCRA/B/TW

XCKWMR54D1H29 / XCKWMR54D2H29

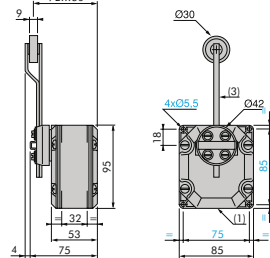


- 1) 3 entries ISO M20 x 1.5 for cable gland
- 2) 2 centring holes  $\varnothing$  3.9 mm
- Ø) 2 slotted holes 6.2 x 6.5 mm

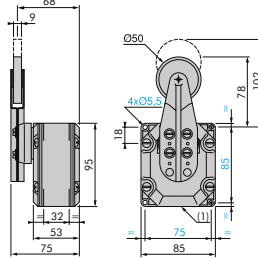
XCRAW111  
XCRBW111



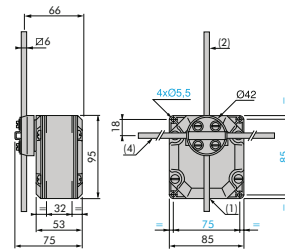
XCRAW121  
XCRBW121



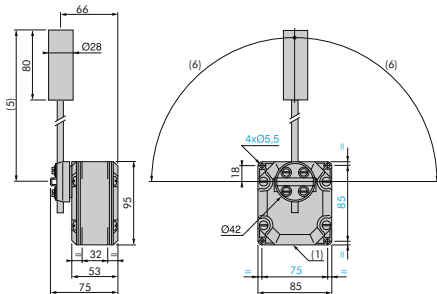
XCRAW151  
XCRBW151



XCREW181  
XCREW171



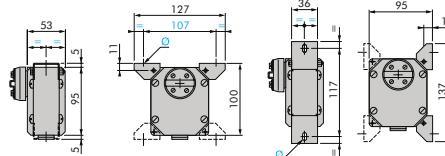
XCRTW115 / XCRTW215



Fixing

Horizontal position

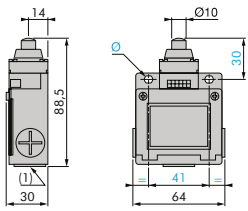
Vertical position



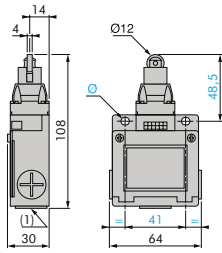
- 1) 1 entry ISO M20 x 1.5 for cable gland
- 2) Lever length: 200 mm
- 3) Lever length + roller: 160 mm
- 4) Lever length: 300 mm for XCRPW and 200 mm for XCREW
- 5) Max: 200 mm - Min: 83 mm
- 6) Max: 90°
- Ø) 2 slotted holes 6.2 x 6.5 mm

# XCKWM - Classique range

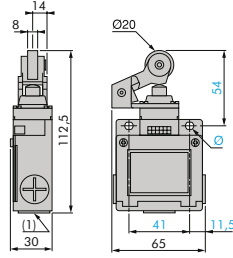
XCKWM2110H29



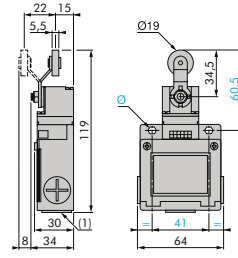
XCKWM2102H29



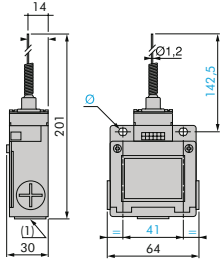
XCKWM2121H29



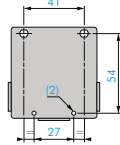
XCKWM2115H29



XCKWM2106H29



arrière



- 1) 3 entries ISO M20 x 1.5 for cable gland
- 2) 2 holes x Ø 4
- Ø) 2 slotted holes 5.2 x 6.2 mm