



The control stations XAWF, made in aluminium, are equipped with our extensive range of robust and flexible control and signalling units HarmAtex.

They combine the functions start and stop for motors, fans, pumps ..., and they can be provided with measuring instruments for current control, voltage or other physical quantities.

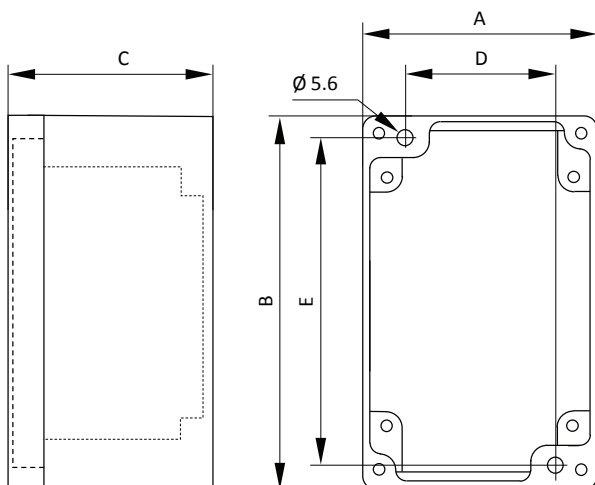
The functions can be predefined or determined according to the requirement of the application. Up to 52 control and signalling units can be installed on the XAWF control units.

TECHNICAL DATA

| | |
|-------------------------------------------------|------------------------------------------------------------------------------------------------------------------------------------------------------------------------------------------------------------|
| Material | Aluminium |
| IP rating | IP65 according to EN/IEC 60529 |
| Temperature range | -20°C ... +40°C or +50°C or +60°C |
| Certificate | INERIS 03ATEX0122X |
| Marking | II 2 GD Ex e IIC T6...T4 Gb Ex e mb IIC T6...T4 Gb Ex d e IIC T6...T4 Gb Ex d e mb IIC T6...T4 Gb Ex tb IIIC T85°C ... T135°C Db |
| Features of the contact block | Ith = 10 A; Ui = 415 V AC Ue = 380 V; Ie = 1,9 A or Ue = 240 V; Ie = 3 A or Ue = 120 V; Ie = 6 A DC Ue = 250 V; Ie = 0,27 A or Ue = 125 V; Ie = 0,55 A or Ue = 24 V; Ie = 2,87 A |
| Features of the LED pilot light | Rated voltage 24 ... 254 V AC/DC Maximal current 2 ... 10 mA |
| Mechanical endurance of the push buttons | Head: 5 million operations - Contact block: 1 million operations |

| Product code | Actuator | Colour | Label | Contact |
|--------------|----------------------------------------------------|----------|----------------|---------|
| XAWF10 | 1 x Push button, spring to return | ● Green | Start | 1NO |
| XAWF11 | 1 x Push button, spring to return | ● Red | Stop | 1NC |
| XAWF16 | 1 x Mushroom, spring to return - Ø 40 mm | ● Red | Emergency stop | 1NC |
| XAWF15 | 1 x Mushroom, Push-Pull - Ø 40 mm | ● Red | Emergency stop | 1NC |
| XAWF17 | 1 x Mushroom, turn to release - Ø 40 mm | ● Red | Emergency stop | 1NC |
| XAWF172 | 1 x Mushroom, release by key - Ø 40 mm | ● Red | Emergency stop | 1NC |
| XAWF13 | 1 x Selector switch, 2 stay put | ● Black | Start - Stop | 1NO |
| XAWF132 | 1 x Selector switch, 2 stay put | ● Black | Manu - Auto | 1NO+1NC |
| XAWF133 | 1 x Selector switch, 2 stay put | ● Black | 0-I | 1NO+1NC |
| XAWF12 | 1 x Selector switch, 3 stay put | ● Black | I-0-II | 1NO+1NC |
| XAWF121 | 1 x Selector switch, 3 spring return to center | ● Black | I-0-II | 1NO+1NC |
| XAWF122 | 1 x Selector switch, key withdrawal in 3 positions | ● Black | I-0-II | 1NO+1NC |
| XAWF143 | 1 x Pilot light, integral LED - 24 to 254 V AC-DC | ● Green | Blank | - |
| XAWF144 | 1 x Pilot light, integral LED - 24 to 254 V AC-DC | ● Red | Blank | - |
| XAWF147 | 1 x Pilot light, integral LED - 24 to 254 V AC-DC | ○ White | Blank | - |
| XAWF146 | 1 x Pilot light, integral LED - 24 to 254 V AC-DC | ● Blue | Blank | - |
| XAWF145 | 1 x Pilot light, integral LED - 24 to 254 V AC-DC | ● Yellow | Blank | - |

| Product code | Actuator | Colour | Label | Contact |
|--------------|---------------------------------------------------|---------|----------------|---------|
| XAWF21 | 1 x Push button, spring to return | ● Green | Start | 1NO |
| | 1 x Push button, spring to return | ● Red | Stop | 1NC |
| XAWF26 | 1 x Push button, spring to return | ● Green | Start | 1NO |
| | 1 x Mushroom, spring to return - Ø 40 mm | ● Red | Emergency stop | 1NC |
| XAWF25 | 1 x Push button, spring to return | ● Green | Start | 1NO |
| | 1 x Mushroom, Push-Pull - Ø 40 mm | ● Red | Emergency stop | 1NC |
| XAWF27 | 1 x Push button, spring to return | ● Green | Start | 1NO |
| | 1 x Mushroom, turn to release - Ø 40 mm | ● Red | Emergency stop | 1NC |
| XAWF272 | 1 x Push button, spring to return | ● Green | Start | 1NO |
| | 1 x Mushroom, release by key - Ø 40 mm | ● Red | Emergency stop | 1NC |
| XAWF24 | 1 x Push button, spring to return | ● Green | Start | 1NO |
| | 1 x Pilot light, integral LED - 24 to 254 V AC-DC | ● Green | Blank | - |
| XAWF244 | 1 x Push button, spring to return | ● Black | Start | 1NO |
| | 1 x Pilot light, integral LED - 24 to 254 V AC-DC | ● Red | Blank | - |
| XAWF31 | 1 x Push button, spring to return | ● Green | Forward | 1NO |
| | 1 x Push button, spring to return | ● Red | Stop | 1NC |
| | 1 x Push button, spring to return | ● Green | Reverse | 1NO |
| XAWF37 | 1 x Push button, spring to return | ● Green | Start | 1NO |
| | 1 x Push button, spring to return | ● Red | Stop | 1NC |
| | 1 x Mushroom, spring to return Ø 40 mm | ● Red | Emergency stop | 1NC |
| XAWF34 | 1 x Push button, spring to return | ● Green | Start | 1NO |
| | 1 x Push button, spring to return | ● Red | Stop | 1NC |
| | 1 x Pilot light, integral LED - 24 to 254 V AC-DC | ● Green | - | - |
| XAWF393 | 1 x Push button, spring to return | ● Green | Start | 1NO |
| | 1 x Mushroom, Push-Pull Ø 40 mm | ● Red | Emergency stop | 1NC |
| | 1 x Pilot light, integral LED - 24 to 254 V AC-DC | ● Green | Blank | - |



Any other configuration on request



| Enclosure | A | B | C | D | E |
|-----------|----|-----|----|----|-----|
| XAWF 1... | 80 | 80 | 77 | 50 | 65 |
| XAWF 2... | 80 | 130 | 77 | 50 | 115 |
| XAWF 3... | 80 | 175 | 77 | 50 | 160 |
| XAWF 4... | 80 | 220 | 77 | 50 | 205 |
| XAWF 6... | 85 | 310 | 77 | 55 | 295 |

Other dimensions on request