



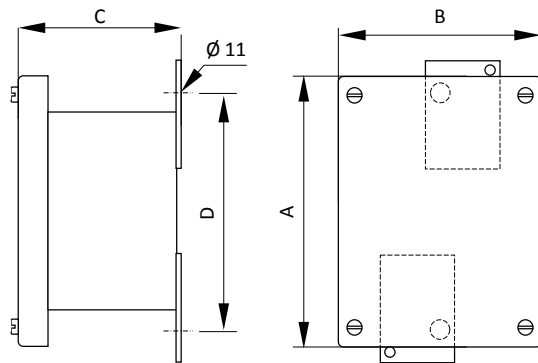
The junction boxes TNAE, made in stainless steel AISI 316L, are dedicated to hazardous areas and ideally suited to environments in the presence of chemical agents, seawater resistant for very high and very low operating temperatures.

The maximum number of terminals depends on the terminal section, the ambient temperature and the required temperature class.

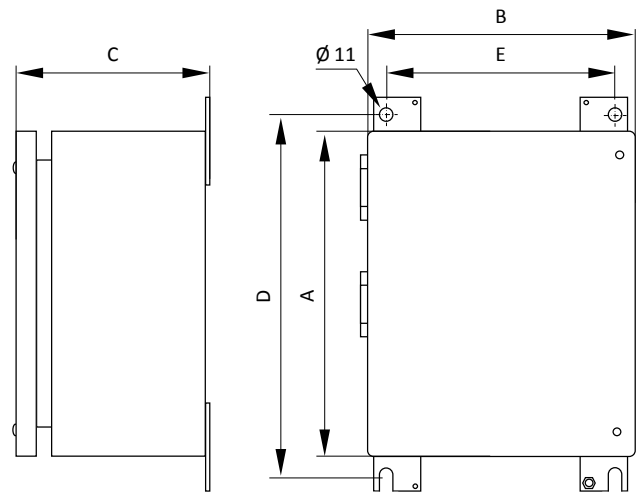
TECHNICAL DATA

| | |
|------------------------------------|---|
| Material | Stainless steel AISI 316L |
| IP rating | IP66/IP67 (IP68 on request) according to EN/IEC 60529 |
| Temperature range | -40°C ... +60°C (T4) -40°C ... +40°C (T5) Option: -50°C ... +60°C |
| Certificate | DNV 10ATEX90171 |
| Marking | II 2 GD Ex e II T5 ... T4 Gb Ex tD A21 T85°C ... T100°C |
| Surface treatment | Acid as standard |
| Accessories upon on request | Breather valves Mounting plate Earth continuity plate, internal, Earth stud Gland plates Cable glands Electropolished treatment |

TNAE 121009 and 151510



TNAE from 202010



Dimensions

| Product code | External | | | Fixing holes | | Max. dissipated power at Tamb = 40°C (W) | Volume (dm ³) | Weight (kg) |
|--------------|----------|-----|-----|--------------|-----|---|------------------------------|----------------|
| | A | B | C | D | E | | | |
| TNAE121009 | 160 | 120 | 90 | 150 | - | 6 W | 1.08 | 1.5 |
| TNAE151510 | 187 | 176 | 100 | 180 | - | 15 W | 2.25 | 2.5 |
| TNAE202010 | 200 | 200 | 100 | 230 | 160 | 20 W | 4.00 | 3.0 |
| TNAE202015 | 200 | 200 | 170 | 230 | 160 | 20 W | 6.00 | 3.5 |
| TNAE282815 | 280 | 280 | 170 | 310 | 240 | 30 W | 11.76 | 5.2 |
| TNAE302015 | 200 | 300 | 170 | 230 | 260 | 30 W | 9.00 | 5.0 |
| TNAE383815 | 380 | 380 | 170 | 410 | 340 | 40 W | 21.66 | 8.1 |
| TNAE384515 | 450 | 380 | 170 | 480 | 340 | 50 W | 25.65 | 8.9 |
| TNAE385715 | 570 | 380 | 170 | 600 | 340 | 65 W | 32.49 | 10.7 |
| TNAE575715 | 570 | 570 | 170 | 600 | 530 | 90 W | 48.74 | 16.4 |
| TNAE575730 | 570 | 570 | 320 | 600 | 530 | 90 W | 97.47 | 21.4 |
| TNAE577620 | 760 | 570 | 220 | 790 | 530 | 120 W | 86.64 | 21.7 |
| TNAE769520 | 950 | 760 | 220 | 980 | 720 | 200 W | 144.40 | 32.9 |

Other sizes available on request

Number maximum of entries per side

| Product code | M20 - 1/2" | | M25 - 3/4" | | M32 - 1" | | M40 - 1" 1/4 | | M50 - 1" 1/2 | | M63 - 2" | |
|--------------|------------|-------|------------|-------|----------|-------|--------------|-------|--------------|-------|----------|-------|
| | A (1) | B (1) | A (1) | B (1) | A (1) | B (1) | A (1) | B (1) | A (1) | B (1) | A (1) | B (1) |
| TNAE121009 | 6 | 4 | 4 | 2 | 3 | 2 | 2 | 1 | 2 | 1 | 1 | 1 |
| TNAE151510 | 6 | 6 | 4 | 4 | 3 | 3 | 2 | 2 | 2 | 2 | 1 | 1 |
| TNAE202010 | 10 | 10 | 7 | 7 | 4 | 4 | 2 | 2 | 2 | 2 | 2 | 2 |
| TNAE202015 | 12 | 12 | 8 | 8 | 6 | 6 | 5 | 5 | 4 | 4 | 3 | 3 |
| TNAE282815 | 18 | 18 | 12 | 12 | 9 | 9 | 8 | 8 | 7 | 7 | 4 | 4 |
| TNAE302015 | 21 | 12 | 14 | 8 | 10 | 6 | 9 | 5 | 8 | 4 | 5 | 3 |
| TNAE383815 | 24 | 24 | 16 | 16 | 12 | 12 | 10 | 10 | 9 | 9 | 6 | 6 |
| TNAE384515 | 30 | 24 | 20 | 16 | 15 | 12 | 13 | 10 | 12 | 9 | 7 | 6 |
| TNAE385715 | 39 | 24 | 26 | 16 | 19 | 12 | 17 | 10 | 15 | 9 | 9 | 6 |
| TNAE575715 | 39 | 39 | 26 | 26 | 19 | 19 | 17 | 17 | 15 | 15 | 9 | 9 |
| TNAE575730 | 88 | 88 | 58 | 58 | 44 | 44 | 39 | 39 | 35 | 35 | 22 | 22 |
| TNAE577620 | 68 | 52 | 45 | 34 | 34 | 26 | 30 | 23 | 27 | 20 | 17 | 13 |
| TNAE769520 | 88 | 68 | 58 | 45 | 44 | 34 | 39 | 30 | 35 | 27 | 22 | 17 |

(1) A: on the long sides - B: on the short sides